

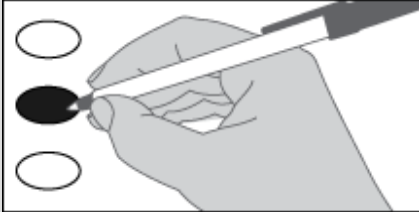


Official Ballot
Special Election
Benton County, Washington
April 28, 2026

SAMPLE

Instructions

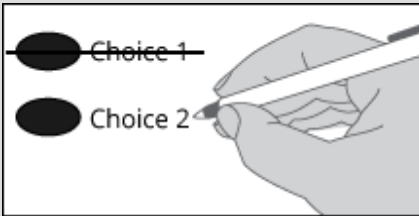
How to vote



Use a dark blue or black ink pen to completely fill in the oval next to your choice.

If you vote for more than one, no vote will be counted for the measure.

How to correct a mistake



To make a correction, draw a line through the entire choice.

You then have the option of making a different choice by completely filling in another oval.

How to Return Your Ballot

Insert ballot into security sleeve.

Insert security sleeve into the ballot return envelope.

Sign and date the voter declaration using the instructions on the return envelope.

NOTE: WAC 434-230-015 prohibits the use of a Power of Attorney to satisfy the signature requirements on the return envelope. If unable to sign, voter should follow the instructions on the return envelope for having two witnesses.

For a list of the people and organizations that donated to state and local candidates and ballot measure campaigns, visit www.pdc.wa.gov.

School District Measure

PROPOSITION NO. 1

PATERSON SCHOOL DISTRICT NO. 50

REPLACEMENT EDUCATIONAL PROGRAMS AND OPERATION LEVY

The Board of Directors of Paterson School District No. 50 adopted Resolution No. 04-2025-26, concerning a proposition to finance educational programs and operation expenses. This proposition would authorize the District to levy the following excess taxes, in place of an expiring levy, on all taxable property within the District, for support of the District's educational programs and operation expenses not funded by the State of Washington:

<u>Collection Year</u>	<u>Estimated Levy Rate/\$1,000 Assessed Value</u>	<u>Levy Amount</u>
2027	\$0.78	\$483,200
2028	\$0.78	\$495,280
2029	\$0.78	\$507,662

all as provided in Resolution No. 04-2025-26. Should this proposition be approved?

LEVY YES

LEVY NO

This Side Intentionally Left Blank

SAMPLE